

Newsletter

Vol. 11 Issue 10 OCTOBER 2010

Price Rs. 10/- Per Copy

**Nehru
Centre**



Dr. Annie Besant Road,
Worli, Mumbai - 400 018.
Phone : 2496 4676
Fax : 2497 3827
Gram : NEHRUCENTR

E-Mail: info@nehru-centre.org
Website: www.nehru-centre.org

Annual Subscription Rs. 100

Events At a Glance...

Culture Wing

Vocal Recital

Nehru Centre presents a vocal recital programme by young artistes featuring Ms. Kalyani Sanjay Hemmady and Yashaswi Sathe Sirpotdar.

21 October 2010, 6:30 pm
Hall of Culture

Lecture

Lecture Series: "India in a Globalized World"

Prof. Parimal Merchant will deliver a lecture on "Succession Planning in Family Business".

Friday, October 22, 2010
5:30 p.m.
Hall of Culture

Chandra's Birth Centenary Celebration

Two Lectures on Tuesday,
19 October 2010, 4 p. m. onwards

Dr. Bal Phondke will speak
on "Life & Times of Chandra"

Dr. S. M. Chitre will speak on
"Chandrasekhar & His Limiting
Mass"

Venue: Hall of Culture

India in a Globalized World

The first part of the 5th lecture dealing with Shri C.K. Prahalad's paradigm delivered by Dr. Sorab Sadri was covered in the monthly Newsletter for September 2010. The second part dealing with "Indian Economic Growth and Development" is covered in the present Newsletter. Following are the excerpts:

Economic growth is a measure of the annual change in the Net National Product and the NNP, is nothing but the Gross Domestic Product (GDP) less Depreciation. On the other hand, development is defined as a measure of change in the Per Capita 'Productivity of Labour' without a commensuration in the aggregate level of employment. The former is a statistical tool that looks at progress whereas the latter is an indicator of the change in the quality of human life. When countries register the former but the latter does not follow, we tend to term the phenomenon as development-less-growth.

Today Indian markets have integrated into the world markets. License Raj is almost over, trade barriers are going down and the business environment has changed. Foreign capital is being welcomed with open arms. On the global scene, technology has become the driving force of change. Business world over are also globalizing. We have (euphemistically) to run faster even to stay on the same competitive spot. As our business globalizes and interlinks itself with the world, the nature and range of business opportunities as well as challenges for us are extensively changing. Present

day competitiveness in the global market place is generally determined by organizational and technological innovations, superior and consistent product quality and customer satisfaction by delivering more than what she/he expects at competitive prices.

We are not alone in this race and the threat that the emerging trends in the world markets will render us uncompetitive in the coming years looms larger. Already we are facing the pinch with Indian buyers looking overseas for products that are either of superior quality, of lower cost or both. In other words, they are looking for value for money. They are demanding customized solutions, excellent service at competitive prices. In this quest, they do not hesitate to look beyond the shores. With the rapid advancements in telecommunications, information flow is instantaneous.

What are the necessary steps that will ensure that we are able to build up on our competitiveness and become global players in our product markets? In my research that spanned West Africa, United Kingdom, East Asia and India, I have tried to identify some critical strategic initiatives that would perhaps help to progressively build organizational competence, capability and competitiveness. However, it will be crucial that organization wide consultations are held to determine the exact policies with participation across all managerial levels. These are:

contd. on page 2

Customer driven approach: In the global market place, the customer has a wide range of choices, and as such, he is more demanding and selective in his choice. He demands more value for money both in the tangible form such as a superior product and intangible form such as courteous and prompt services, proper guidance and training. Today service is becoming the biggest determinant of satisfaction.

In our endeavour to become global players, we have to put the customer at the center of our strategy. This customer-based focus will provide the foundations for developing the organization's vision, strategy and structure. In India the Tata and the Godrej empires have grown so close to the customer that he is treated as a stakeholder.

Strategic Outlook: Strategy is a deliberate search for a plan of action that will develop a business's competitive advantage and compound it. This search is an iterative process that begins with recognition of where we are and what all we have. We will have to embark on this exercise of determining where we stand in the present market and what resources we have. A good look at the companies that have failed would show, that the strategic outlook was found wanting. Invariably, short run actual cost considerations took precedence over long run opportunity cost initiatives.

Corporate Governance: The quality of Corporate Governance depends on the quality of the Board. The Board must be compact and balanced. It should be made of individuals from different disciplines having diverse viewpoints. It should be capable of appreciating the issues put forward by the management and discharge its duty towards the various stakeholders in the organization. It should also keep the company abreast of the latest happenings in the corporate world and evolve strategies to maximize the welfare of the various stakeholders towards which it is responsible.

Quality Process and Innovations: Until now, our approach to quality has

been the final test carried out by the Quality Assurance department. This concept has to be thrown into the trash box. Quality will have to become an ingredient into our products and services if we are to be competitive. Every member of the organization will have to strive for achieving the highest standards in quality. We have to get the products right the first time. In the competitive market place there may be no second chance.

Learning Organization: If we are to move out of our slumber and move ahead towards the vision of not only catching up with the global players in our areas of operations but forging ahead of them and becoming the trendsetters, we have to strive to develop a culture of continuous improvement. Business is becoming increasingly knowledge driven as we make progress with technology. Innovations both organizational and technological are setting the pace for change. In the past few years, capital and labour accounted for only 25% of the total growth in developed countries. The remaining 75% come predominantly from technological innovations. That the technological and managerial innovations are going to shape up the coming competition more intensely is under no doubt.

In today's technologically driven business paradigm, it is knowledge that commands premium in the market place. Thus, acquiring and assimilation of knowledge becomes an essential ingredient in the strategy for global competitiveness. For this, we require to develop systems that foster the process

of knowledge acquisition and dispersion within the organization. To see how well we are doing we will have to consistently benchmark ourselves against the best, not only in our line of business, but also in other businesses where similar processes might be used. We have to keep abreast of the happenings in the world and embrace new developments/ideas faster than our competitors. In short, the organization has to constantly update its knowledge and develop new skills. The process of learning in the organization has to be a continuous one and one in which value addition is emphasized.

People Management Systems: It is quite evident to the discerning mind that as a result of liberalization and globalization, human resource management (HRM) has acquired strategic importance. The quality of human resources available to the company and the relationship will determine whether we succeed in achieving our vision. Thus, attracting, developing and retaining superior knowledge in the form of human resources will be a priority for the organization.

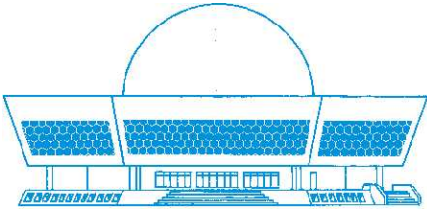
This superior knowledge building process requires a paradigm shift in the employee-manager relationship. It would be imperative to have flat and non-hierarchical organization if such people are to flourish. It would call for breaking down the communication barriers, with information and knowledge to be shared across the organization.

(to be continued)

What Nehru said...

The main purpose of the United Nations is to build up a world without war, a world based on the co-operation of nations and peoples. It is not merely a world where war is kept in check by a balancing of armed forces. It is much deeper than that. It is a world from which the major causes of war have been removed with social structures built up which further peaceful co-operation within a nation as well as between nations.

October 3, 1960



NEHRU PLANETARIUM SKY SHOW:

"Stars & the Wonders of the Universe"

12 noon (Hindi), 1:30 pm (Marathi)
3 pm (English) & 4:30 pm (Hindi)

MONDAY CLOSED

Prof. Jayant V. Narlikar, Emeritus Professor, IUCAA, Pune gave a talk on "**A Search For Very Old Stars**", on Wednesday, 15 September 2010. We bring you here some excerpts.:

Universe is the collection of everything that you have in existence, nothing should be older than the universe itself. Supposing one is searching for old objects, trying to see whether they are older than the present accepted age of Universe as per the Big Bang hypothesis. It is a possibility that stars much older than the 14 billion years might exist but we may have not seen them so far. Supposing we are looking at a galaxy and find that it has high red shift, this would mean it is very far away as per the Hubble's Law. Very far away also means that we are seeing it as it was very long time back. Let us say it is just 6 billion light years away. You calculate its age and that turns out to be of the order of 15 billion years, then the total age is $15 + 6 = 21$ which is more than the age of the universe. So this is another way of doing things. Another method is the study of the dynamics of clusters of galaxies. You can do some calculation with statistical mechanics of galaxies going round each other under gravitational force. From its distribution of velocity you can make and estimate how old the cluster is. And again if the age is more, that is more than the age of the universe then that means it is a contradiction.

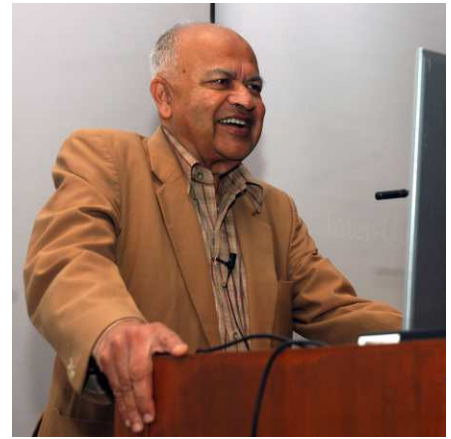
Finding an old system disproves the standard model but can be considered with alternative cosmology which does not require you to have an origin of the universe. Supposing the universe is

without a beginning then you can expect arbitrarily old stars.

It started with the inspiration from distinguished astrophysicists Ambartsumian. He had said one of the important problems confronting us in the study of outflow of matter and ejections from the nuclei of galaxies is the quantitative evolution of the ejected masses. This refers equally to those galaxies of which the central part show emission lines and to radio galaxies and to other examples of discrete ejection. Ambartsumian was so impressed with the data that he did not hesitate to sacrifice one the holy cow's of basic physics. "...The few facts at our disposal show that these data may conflict with the law of conservation of energy (and matter) in its present form, and may perhaps require a generalization of this law."

He was attaching so much importance to these observation of astronomy that he felt that a basic tenet of physics might need revision. An alternative was proposed guided by Ambartsumian's ideas by F. Hoyle, G. Burbidge and J. V. Narlikar. It was called the Quasi-Steady State Cosmology (QSSC). After that several publications on the QSSC have since appeared in several reputed journals as well as conference proceedings. Three of us in the 2000 wrote a book "A different approach to cosmology" and its subtitle says "Static Universe through the Big Bang towards Reality". So it was an alternative to Big Bang. We have made it into a kind of formal structure consistent with basic physics and we propose universe is driven by such mini bangs rather than a singular one Big Bang.

Instead of a Big Bang which happened mysteriously without any physical theory long back what we are suggesting is that mini-Bangs occur time and again and you can always study them and they are controlled by physics which is basically understandable which is not something very mysterious. Application to cosmology means that if you have these mini bangs happening regularly at some time or other the ejection and the explosive force that is created drives the whole universe and into a state of . At the



Prof. Narlikar delivering his talk

expansion. Where can we look for such old stars? So, the answer is according to QSSC, such stars would have been born in the previous cycle in our own galaxy will be ejected outward in the Big Creation activity which would have happened. At the minimum value of the scale factor and those stars will be ejected outside the galaxy so you should look in the halo of our Milky Way system and one such location is to look for them in the Large Magellanic Cloud (LMC), because they are outside the galaxy almost on our door step so therefore one could expect to see some of those old population stars in LMC. You can look for it at other places also but this is a known concentration of stars.

*Piyush Pandey
Director, Nehru Planetarium*

Chandra's Birth Centenary Celebration

**Two Lectures on Tuesday,
19 October 2010
from 4 p. m. onwards:
Venue: Hall of Culture.**

**Dr. Bal Phondke
on "Life & Times of
Chandra"**

Tea Break

**Dr. S. M. Chitre on
"Chandrasekhar & His
Limiting Mass"**

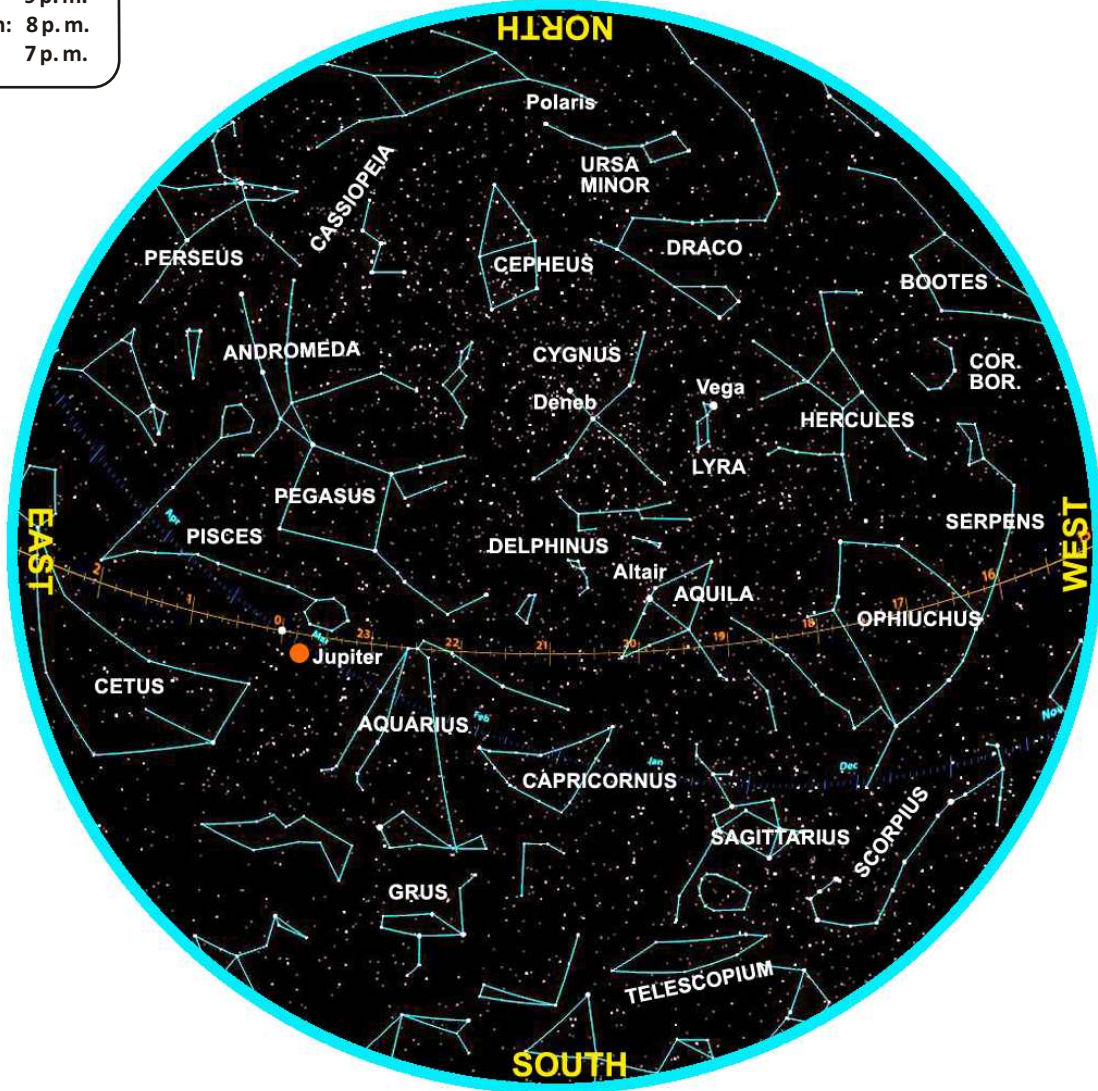
STAR CHART FOR OCTOBER 2010

Use the Chart :

Early month : 9 p. m.

Middle month: 8 p. m.

Late month: 7 p. m.



Hold the chart vertically before your eyes and turn until the geographical direction you are facing shows at the bottom of the chart. Only one planet Jupiter (in Pisces) is within the chart boundaries for the time the chart is drawn. In early evening sky Venus and Mars can be seen in Libra. Saturn can be seen in Virgo in the morning sky after the 15th. Mercury is too close to the Sun to be seen.

Phases of the Moon (timings in IST hh:mm)

Last Quarter (Krishna Paksha Ashtami)	New Moon (Amavasya)	First Quarter (Shukla Paksha Ashtami)	Full Moon (Poornima)
01 Oct., 09:22 30 Oct., 18:16	08 Oct., 00:14	15 Oct., 02:57	23 Oct., 07:07

Vocal Recital

Nehru Centre presents a vocal recital programme by young artistes featuring **Ms. Kalyani Sanjay Hemmady**, student of **Pandit Murli Manohar Shukla** and **Yashaswi Sathe Sirpotdar**, student of **Pandita Smt. Padma Talwalkar**.

Kalyani is Sangeet Visharad from Akhil Bhartiya Gandharva Mahavidyalaya.

She has been under tutelage of Pandit Murli Manohar Shukla since 2000. She has participated in many classical vocal competitions and has won many awards. She has performed at various musical programmes.

Yashaswi is Sangeet Visharad. She is getting guidance for more than twelve years from Pandita Smt. Padma Talwalkar. She is also accompanying her on Tanpura in various classical vocal concerts.

She is graded artist of 'All India Radio'. She has received scholarship and Puraskars including *Chhatra Gandharva Puraskar* of the Government of Maharashtra.

She has performed at major music festivals in Maharashtra and outside.

21st October 2010, 6:30 pm
Hall of Culture

Entry: Open to all



New Arrivals - Books

Sr. No.	Title	Author
1.	The brilliance of bio energy in business and in practice	Ralph E. H. Sims
2.	Reef: Exploring the underwater world	Bob Bridle
3.	The encyclopedia of natural calamities in 8 vols.	Michael Allaby
4.	Wetlands in danger	Patrick Dugan, Ed.
5.	Illustrated aquatic and wetland plants in harmony with mankind	Subir K. Ghosh
6.	Democratisation of water	B. K. Thapliyal and others
7.	The encyclopedia of world geography	Graham Bateman & Victoria Egan. Eds.
8.	Economic environment of business	Veena Keshav Pailwar
9.	Earth then and now: Potent visual evidence of our changing world	Mitchell Beazley
10.	Volcano: Portrait of a world on fire	Donna O'Meara

Nehru Centre Library is open for reference. Xeroxing facilities are available.
Timings: 10.30 am to 5.00 pm
Contact: Arati Desai, Librarian Phone: 2498 3921

The Discovery of India Essay Competition was held on 15th August 2010 at the 'Who Are We' Hall. About 65 school children from 45 schools participated in the competition. The prize distribution was held on 4th September 2010.

The winners were :

1st Prize	Shruti Sundaresan Navy Children High School, Colaba	Std IX
2nd Prize	Charuta Kulkarni Udayachal High School, Vikhroli	Std IX
3rd Prize	Avanti Nagpal The Cathedral & John Connon School Fort	Std VIII
<i>Consolation Prize :</i>	Almas Sayyad Canossa High School, Mahim	Std IX
	Shivani Shvtarkar Balmohan Vidya Mandir, Dadar	Std IX
	Priyanka Mayekar Parle Tilak Vidyalaya, Vile Parle	Std VIII

The Art Gallery

Open from 11:00 am to 7:00 pm daily

PROGRAMMES FOR OCTOBER 2010

PRAFULL SAWANT

Prafull received G.D.A. in Painting from Nasik with first class and Dip.A.Ed from Sir J. J. School of Art, Mumbai. Presently Lecturer in Chitrakala Mahavidyalaya, Nasik. He has had many shows, won many prestigious awards in India and abroad. His landscapes and portraits are in oils and acrylic on canvas and in water colour

Tuesday 28th September to
Monday 4th October 2010
(AC Gallery)

SIDDHARTHA SUKLA . SRIHARSHA SUKLA

Siddhartha received B.F.A. degree and Diploma in Computer Aided Graphic Designing from Bhubaneswar. He has participated in art exhibitions in India and abroad. His landscapes are in collage. He is hearing impaired artist from Orissa.

Sriharsha has B.F.A. from Bhubaneswar. He has also been trained in Computer Graphic Designing and Patta Chitra from Orissa. He is also hearing impaired and does portraits in collage.

Tuesday 28th September to
Monday 4th October 2010
(Circular Gallery)

SHIVAJI MHASKE. S. NIMBALKAR

S. Mhaske received G.D.A. in Fine Arts and A.M. from Kolhapur. Presently working as Principal at

Nehru Centre Newsletter - October 2010



Painting by Shivaji Mhaske

Nehru High School & Jr. College, Kolhapur. He has won many awards. His landscapes are in acrylic and oil on canvas.

S. Nimbalkar secured G.D.A. in Painting and Commercial Art. He has many shows to his credit and won awards. His landscapes are in water colours and acrylic.

Tuesday 5th October to
Monday 11th October 2010
(AC Gallery)

JAYDEEP MAISURIYA. TEJASH BHATIYA



Painting by Jaydeep Maisuriya

Jaydeep passed in Applied Art from Navsari, Gujrat. He worked as an Illustrator and Designer in Ad Agency. His paintings are figurative in acrylic.



Painting by Tejash Bhatiya

Tejash is an Instrument Technician from Gujarat. His landscapes are acrylic and oils on canvas.

Tuesday 5th October to
Monday 11th October 2010
(Circular Gallery)

SOMNATH DUTTA . BAPPA MAJI . KAJAL MONDAL. SUSANTA DAS



Painting by Somnath Dutta

Somnath received B.V.A. in Western Painting from Govt. College of Art &

Craft, Kolkata. His paintings are landscapes in inks on paper.



"Give & Take" - sculpture in Terracotta by Bappa Maji

Bappa secured B.V.A. in Sculpture & Modelling from Govt. College, Kolkata. His sculptures are in terracota.

Kajal received B.V.A. in first class from Govt. College, Kolkata. His paintings are surrealistic compositions in acrylic. He has won many awards in his academic years.

Susanta has B.V.A. degree from Govt. College of Art & Craft, Kolkata. His figurative compositions are in acrylic on canvas.

**Tuesday 12th October to
Monday 18th October 2010
(AC Gallery)**

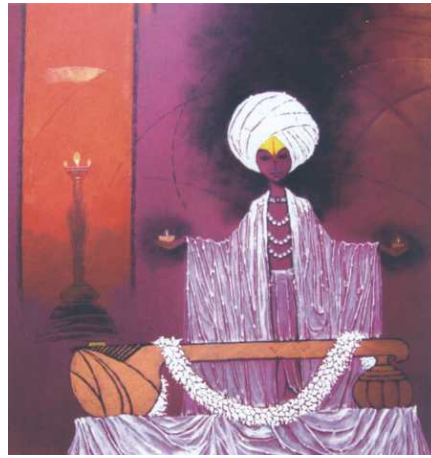
BABAN MANE

Baban has G.D.A. in Commercial Art from Kalaniketan Mahavidyalaya, Kolhapur. He has many shows to his credit. His landscapes are in water colours.

**Tuesday 12th October to
Monday 18th October 2010
(Circular Gallery)**

VIJAYRAJ BODHANKAR

Vijayraj graduated from Sir J. J. Institute of Applied Art, Mumbai. He



Painting by Vijayraj Bodhankar

has worked in ad agencies and News papers as illustrator, animator and caricaturist. He has many shows to his credit and has published books. His paintings are figurative in acrylic and oils.

**Tuesday 19th October to
Monday 25th October 2010
(AC Gallery)**

**ARVIND VAKANI .
VANRAJSINH JHALA .
HARSHAD RATHOD .
JASHVANT
NATHTHUKARAWALA & others
from Guajrat.**

Arvind received Diploma in Painting, A.M. and B.A. with Indian culture from Gujarat. His paintings are abstract in mix media on canvas.



Painting by Vanrajsinh Jhala

Vanrajsinh secured G.D.A. in Paintng and Art Masters from Gujarat. His paintings are compositions in oil on canvas.

Harshad is a Senior artist. Received Art Master from Ahmedabad. His paintings on birds are in acrylic on paper.

Jashvant has G.D.A. in Painting, A.M. and D.T.C. from Gujarat. He has won many awards. His paintings are portraits and figurative compositions in oils and acrylic.

**Tuesday 19th October to
Monday 25th October 2010
(Circular Gallery)**

KANU PATEL

Kanu Patel secured A.T.D. and G.D.A. in Painting from Gujarat with First rank. He has been exhibiting his works since last twenty two years. He has won many prestigious awards. His paintings are figurative and events of day to day incidents.

**Tuesday 26th October to
Monday 1st November 2010
(AC Gallery)**

**YOGITA DATTAWAL .
ABDUL SALAM KHAN**



Painting by Yogita Dattawal

Yogita has G.D.A. and A.T.D. from Nasik. She has won many awards for her landscapes in water colours.

Abdul has Chitra Bisarad from Chandigarh and M.A. in History. His landscapes are in oil colours.

**Tuesday 26th October to
Monday 1st November 2010
(Circular Gallery)**

FOR PRIVATE
CIRCULATION ONLY

DISCOVERY OF INDIA EXPOSITION

NEHRU CENTRE PUBLICATIONS BOOKS

REMEMBERING EINSTEIN

INDIAN ASTRONOMY
A Source Book

EXPLORING THE UNIVERSE:
The Planetarium Way

SCIENCE IN INDIA: PAST & PRESENT

DISCOVERY OF INDIA
Abridged and illustrated & VCD Version

NEHRU REVISITED

RULE OF LAW IN A FREE SOCIETY

CHALLENGES TO DEMOCRACY IN INDIA

Colourful Catalogues of

HAREN DAS

PROF. P. A. DHOND

COLLECTOR'S PRIDE

K. B. KULKARNI

VINAYAK S. MASOJI

SAMAKALEEN (Contemporary Five Artists)

VINAYAKRAO WAGH

RAJARAM PANVALKAR

KRISHNAJI KETKAR

DATTAJIRAO DALVI

GOVIND MALADKAR

NAGESH BHIMRAO SABANNAVAR

NARAYAN L. SONAVADEKAR

"GURU-SHISHYA"

BABA GAJBAR & GANPATRAO

WADANGEKAR

D. G. KULKARNI (DIZI)

MILLENNIUM SHOW

(A Century of Art from Maharashtra)

B. V. TALIM & H. B. TALIM

RAVINDRA MESTRY

ART FUSION 2007 / 2008 / 2009

SANSKRUTI

CD ROM : An Aesthetics of Indian Culture

Set of ten greeting cards

Based on Discovery of India Exposition

Set of five assorted gift cards

Designed by Handicapped children

Available at:

Discovery of India Exposition, Ground Floor,
NEHRU CENTRE, Worli, Mumbai - 400 018.

Glimpses

Know Your India:

Continuity & Change – Sultanate

BENGAL AND JAUNPUR

Bengal had always been a difficult province to hold. Yet any Sultan, to be secure in Delhi, had to enforce some sort of allegiance from its ruler. Bengal had enough resources to support the ambitions of any astute rebel. The Ilyas Shahi rule was replaced by Jalal-ud-din, the converted son of Raja Ganesha. Jalal-ud-din had a Brahman purohit and Muslim nobles at his court. Later an Ethiopian clique came to power which was replaced by an Arab one.

In spite of the political turmoil the rule of Bengal extended into Assam and Orissa for some time. Its agriculture and commerce continued uninterrupted. Its trade relations with China were strong and the Ming emperors sent embassies to the court of the Bengal rulers.

Jaunpur was one of the successor states of the Sultanate. Malik Sarwar, the Governor appointed by Firuz Tughiaq, became independent in 1398. He established a kingdom but could not found a dynasty because he was a eunuch. His brother's progeny were the Sharqi dynasty whose kingdom included Aligarh and Moradabad. Its rulers invaded Bengal, Delhi and Orissa at various times. Their allies were usually Rajput chieftains while their opponents mostly neighbouring Muslim kings. Sikander Lodi annexed this kingdom and destroyed the many monuments that the Sharqis had built.

(to be continued)

Exposition open from 10.30 am to 5 pm - Every Day except Monday

TO OUR READERS

Kindly write to us if there is any discrepancy in the address (or name). It is our aim to reach this publication well before the beginning of the month, to ensure that you do not miss any programmes of Nehru Centre.

Published for Nehru Centre by Srinivas Krishna Kulkarni
at Discovery of India Building, Dr. Annie Besant Road, Worli, Mumbai - 400 018.
and printed by him at M/s Trimurti Enterprises
B/4, Gandhi Nagar, D. S. Road, Lower Parel, Mumbai - 400 013. Phone : 2494 5304 / 9820280366
Editor : Srinivas Krishna Kulkarni Tel : 2496 4676 Fax : 2497 3827

Design & Layout : Pramod Rane & Imtiaz Kalu